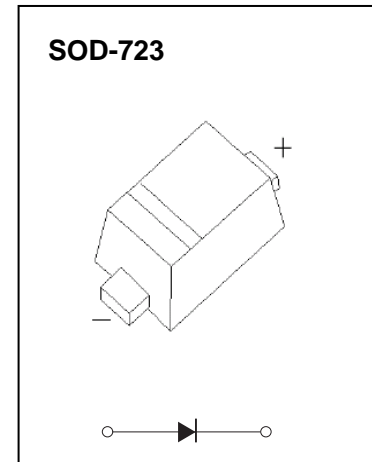


Plastic-Encapsulate Diodes

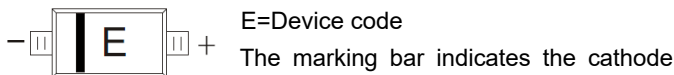
Schottky barrier Diode

FEATURES

- Small surface mounting type
- Low reverse current and low forward voltage
- High reliability



MARKING: E



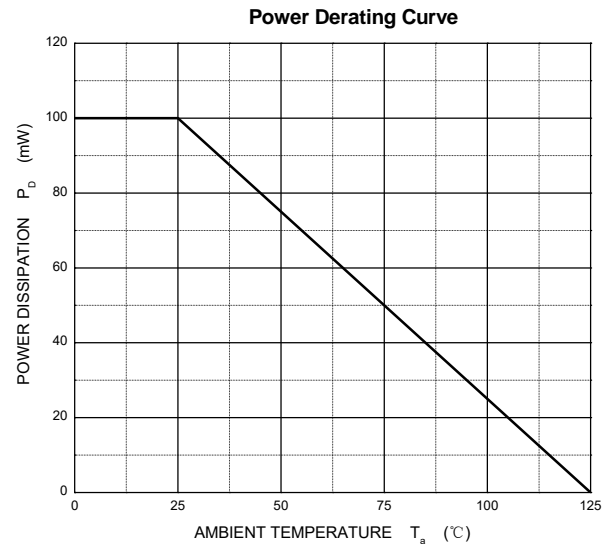
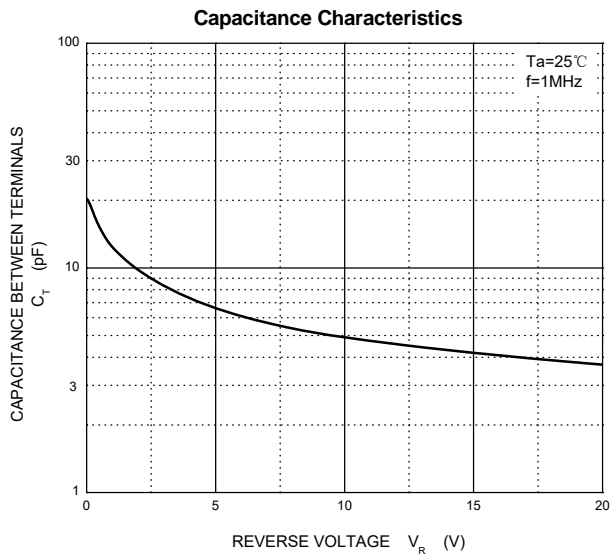
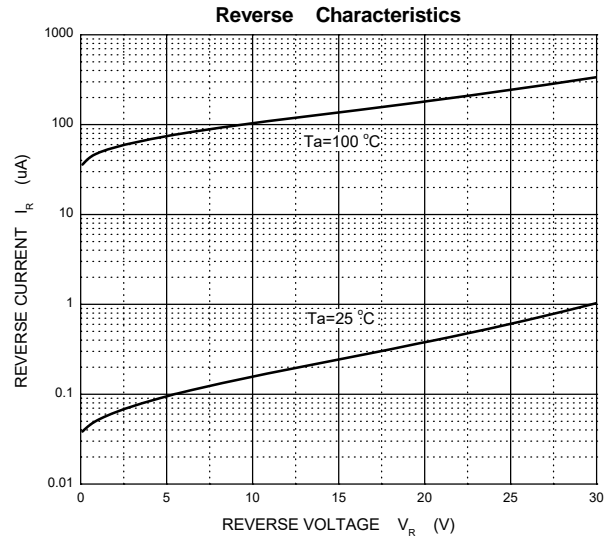
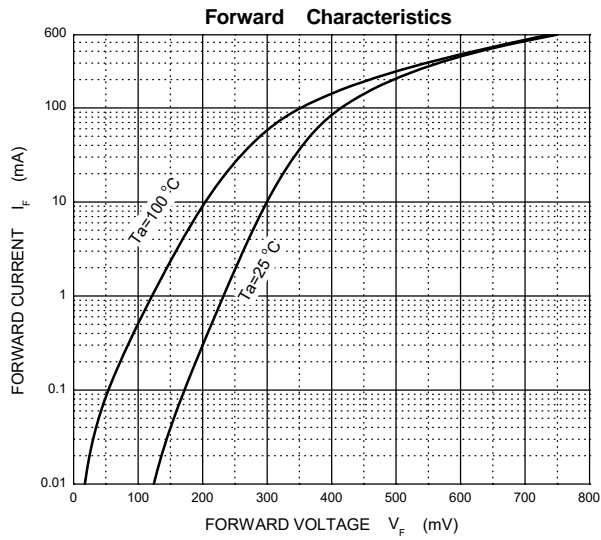
Maximum Ratings and Electrical Characteristics, Single Diode @Ta=25°C

Parameter	Symbol	Limit	Unit
DC reverse voltage	V_R	30	V
Mean rectifying current	I_O	200	mA
Peak Forward Surge Current	I_{FSM}	500	mA
Power dissipation	D_B	100	mW
Thermal Resistance Junction to Ambient	θ_{JA}	1000	°C/W
Operating Junction Temperature Range	T_j	-40 ~ +125	°C
Storage Temperature Range	T_{stg}	-55 ~ +150	°C

Electrical Ratings @Ta=25°C

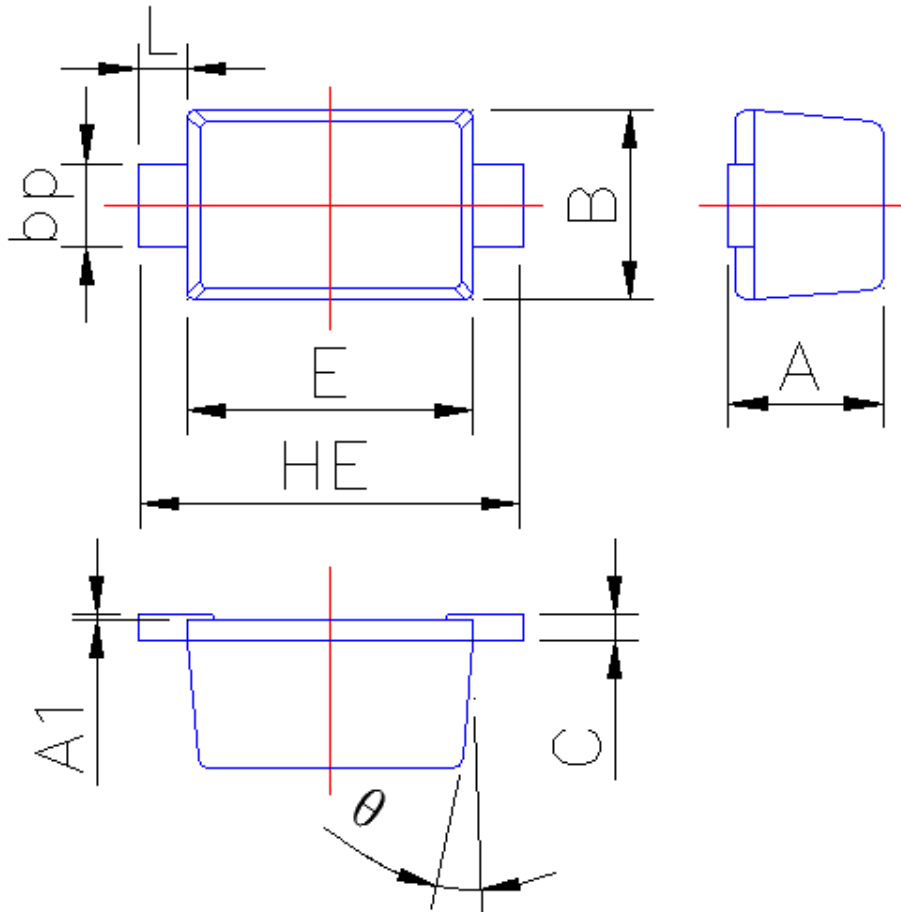
Parameter	Symbol	Min	Typ	Max	Unit	Conditions
Forward voltage	V_F			0.45	V	$I_F=10mA$
Reverse current	I_R			0.5	μA	$V_R=10V$

Typical Characteristics





SOD-723-Package Outline Dimensions



Symbol	Dimension in Millimeters	
	Min	Max
A	0.515	0.580
A1	0.010	0.070
B	0.550	0.650
bp	0.250	0.350
C	0.08	0.150
E	0.900	1.100
HE	1.30	1.50
L	0.150	0.250
θ	7°	